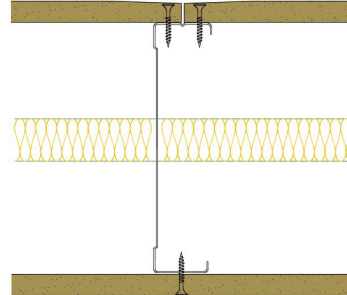


## 146-K-51(25) - SPEEDLINE System Data Sheet - Version V1 (24-10-23)

SPEEDLINE 146mm 'C' Stud Partition @600mm Ctrs, with Knauf 12.5mm Wallboard each side, 25mm APR



### System Performance Breakdown

Fire Resistance:

BS476 Part 22:1987:

Test Ref & Date or Applied Ref & Report:

Max Height:

Thickness:

Duty Grade: BS 5234: Part 2:1992:

Sound Insulation:

**30/30 Minutes** (Integrity/Insulation).

**BTC 17436F - BRE Report P102396-1011B**

**Refer to Speedline Specification Clause**

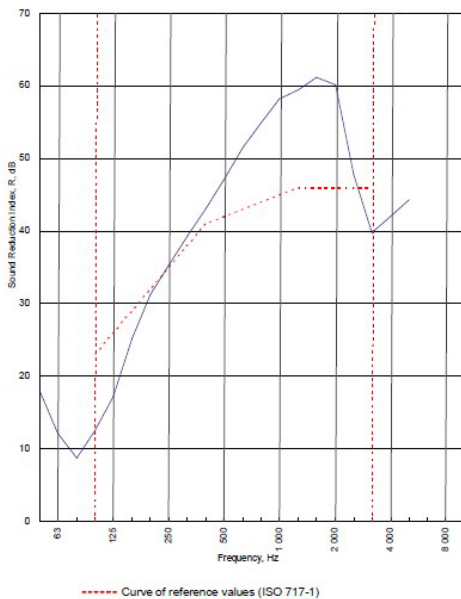
**173 mm.** (At Base Track, Excluding Finishes)

**Medium - Annexes A-F**

**42 R<sub>w</sub>dB**, Date Tested or Assessed Against - 70-K-51(25)

Test Code:  
**H17514AA**  
Test Date:  
08/08/2011

| Freq. Hz | R dB |
|----------|------|
| 50       | 18.1 |
| 63       | 12.1 |
| 80       | 8.7  |
| 100      | 12.5 |
| 125      | 17.1 |
| 160      | 25.2 |
| 200      | 31.3 |
| 250      | 35.2 |
| 315      | 39.3 |
| 400      | 43.1 |
| 500      | 47.1 |
| 630      | 51.5 |
| 800      | 54.9 |
| 1000     | 58.2 |
| 1250     | 59.5 |
| 1600     | 61.2 |
| 2000     | 60.1 |
| 2500     | 47.7 |
| 3150     | 39.8 |
| 4000     | 42.0 |
| 5000     | 44.3 |
| 6300     |      |
| 8000     |      |
| 10000    |      |



Rating according to BS EN ISO 717-1:1997  
**R<sub>w</sub> (C;Ctr) = 42 (-4;-11) dB**  
 Max dev. 10.5 dB at 100 Hz

|   |                              |                              |                               |
|---|------------------------------|------------------------------|-------------------------------|
| Evaluation based on laboratory measurement results obtained by an engineering method: | C <sub>50-150</sub> = -6 dB  | C <sub>50-500</sub> = -5 dB  | C <sub>100-500</sub> = -4 dB  |
|   | C <sub>50-150</sub> = -16 dB | C <sub>50-500</sub> = -16 dB | C <sub>100-500</sub> = -11 dB |

TESTED AT ONE OF THE UKAS ACCREDITED LABORATORIES BELOW

- B.T.C (H-Ref on Graph)
- B.R.E
- AIRO
- S.R.L

Customer: Metsec plc Hepsce Division



BTC 17514A: Page 9 of 11

SPEEDLINE Drywall Systems, Adsetts House, 16 Europa View, Sheffield Business Park, Sheffield, S9 1XH.

Tel: 0114 231 8030.

Email: [enquiries@speedlinedrywall.co.uk](mailto:enquiries@speedlinedrywall.co.uk)

(As per the requirements set out in ISO/IEC 17025:2017 regarding test data the results stated have been carried out by voestalpine Metsec plc as part of the contract to supply Speedline Metal Sections to SIG Plc)